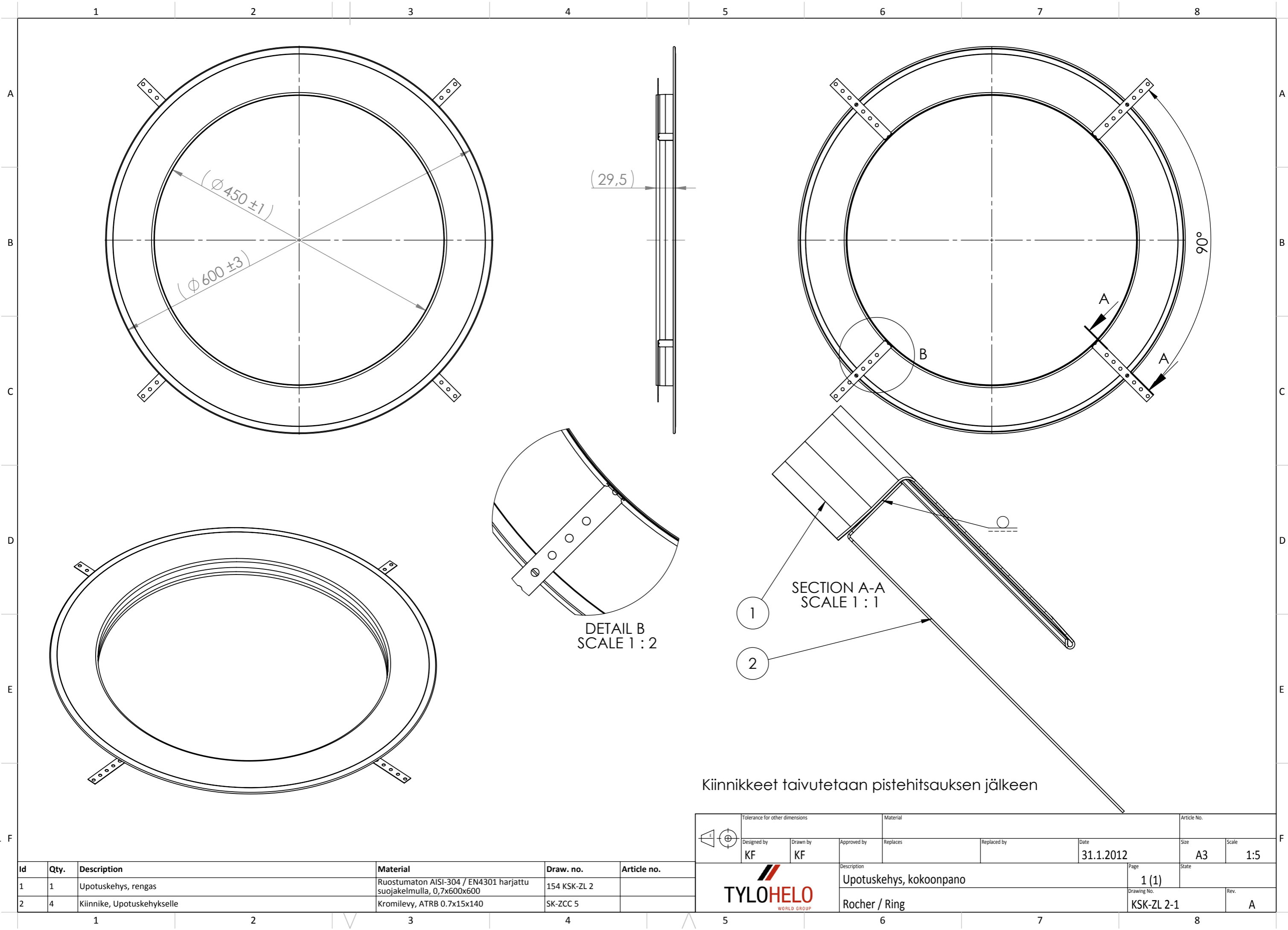


This document must not be copied without our written permission, and the contents thereof must not be imparted to a third party nor be used for any unauthorized purpose. Contravention will be prosecuted.



Kiinnikkeet taivutetaan pistehitsauksen jälkeen

Id	Qty.	Description	Material	Draw. no.	Article no.
1	1	Upotuskehys, rengas	Ruostumaton AISI-304 / EN4301 harjattu suojakelmulla, 0,7x600x600	154 KSK-ZL 2	
2	4	Kiinnike, Upotuskehykselle	Kromilevy, ATRB 0.7x15x140	SK-ZCC 5	

Tolerance for other dimensions		Material		Article No.	
Designed by KF	Drawn by KF	Approved by	Replaces	Replaced by	Date 31.1.2012
Description Upotuskehys, kokoonpano			Page 1 (1)	Size A3	Scale 1:5
TYLOHELO WORLD GROUP				Drawing No. KSK-ZL 2-1	Rev. A